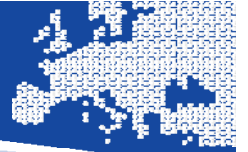


Cohesion Policy support for Sustainable Energy – The ERDF Amendment

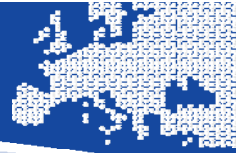
CECODHAS, CEMR, CoR
22 June 2009

Beth Masterson
Policy Analyst

DG Regional Policy – Thematic Coordination and Innovation



- How do energy investments contribute to Cohesion Policy goals?
- Increasing support for sustainable energy – the ERDF amendment
- From policy into practice...



Energy investments advancing Cohesion Policy goals

Energy efficiency and renewables investments bring economic, social and environment **benefit to regions:**

- Competitiveness, job creation
- Security of energy supply
- Improve and protect the environment

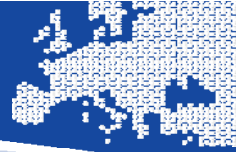


EU RES
target =
2.8 M jobs

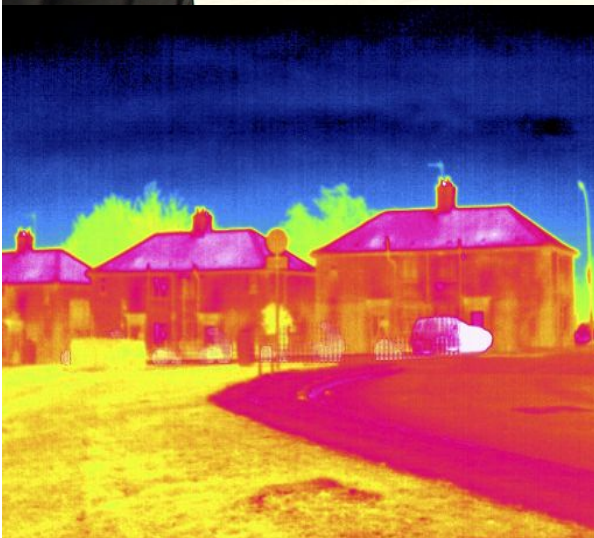


EU EE
target =
€220 bn
savings/
year

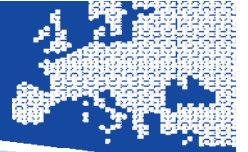
reducing energy costs and alleviating energy



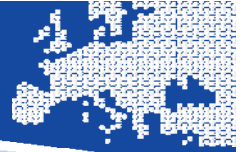
Why target the building sector?



- Approx. 40 % of EU final energy consumption & 36% of EU CO² emissions
- Residential buildings consume c.2/3 energy consumed by buildings sector
- Single most cost-effective sector for energy reduction: savings up to 30% by 2020
- New buildings represent only 1% of total stock – ERDF focus existing buildings

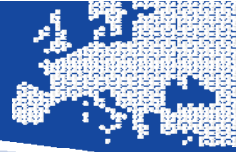


- How do energy investments contribute to Cohesion Policy goals?
- Increasing support for sustainable energy – the ERDF amendment
- From policy into practice...

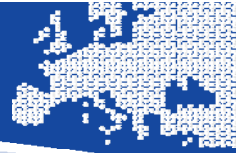


Responding to energy needs in the residential sector in EU27

- Amendment ERDF art. 7 – extend eligibility for RES & EE investments in **existing** housing (adopted 6 May).
- Allocation to EE and RES investments in residential sector cannot exceed **4%** of the total ERDF allocation to the MS for 2007-13.
- MS shall define categories of eligible housing in national rules with objective of supporting **social cohesion**.
- No requirement to modify OPs. MS choice.



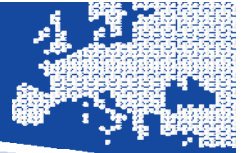
- How do energy investments contribute to Cohesion Policy goals?
- Increasing support for sustainable energy – the ERDF amendment
- From policy into practice...



Innovative finance – making ERDF funds go further

- Investment needs huge – need better leverage of grant support
- Investments generate savings – self-financing
- Funding conditional on energy efficiency improvement – guarantee energy saving
- Revolving funds allow funds to be re-used again and again...

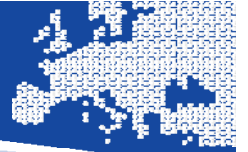




Mobilise technical assistance for action

- Need to move beyond studies → enabling effective investment
- Strengthen & involve national intermediaries (Energy Agencies)
- Capacity building & training (public authorities, home owners, SMEs)
- Learn from existing good practice





Success Factors

1. Need for awareness raising, training, energy advisors, aggregating demand
2. Involve the local community, market actors & industry; tailor schemes
3. Guarantee energy savings in line with EPBD
4. Plan for monitoring and enforcement
5. Exploit public-private synergies; do not crowd out
6. Complementary support to renewables for remaining energy demand